

Quick Start Manual

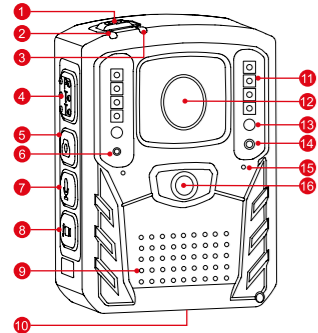
This Manual will guide you to learn quickly to use the Recorder. Please read it carefully and keep it for future reference.

Common Functions of P61 Models(“●”: the relevant function is available; “○”: the relevant function is not available.)

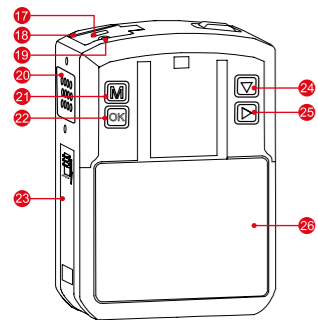
| Model | PTT | IR LED | White LED | Laser LED | UV LED | WiFi | 4G | GPS |
|--------------|-----|--------|-----------|-----------|--------|------|----|-----|
| P61 Pro | ● | ● | ● | ● | ● | ● | ● | ● |
| P61 Advanced | ● | ● | ● | ● | ● | ● | ○ | ● |
| P61 Standard | ● | ● | ● | ● | ● | ○ | ○ | ○ |

★ Know the Recorder

> Components



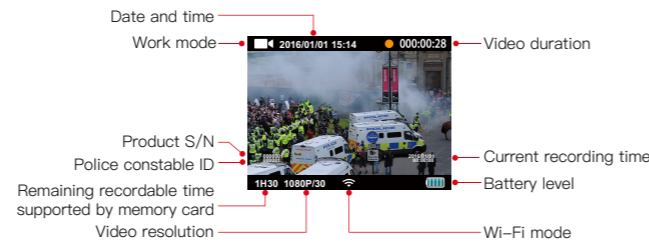
1. Power key "U"
2. Work indicator L1 (red/yellow)
3. Work indicator L2 (green/blue)
4. PTT key "PTT"
5. Photo key "P"
6. Laser LED
7. Voice key "V"
8. Mark key "M"
9. Speaker
10. Contact port
11. IR LED
12. Lens
13. White LED
14. UV LED
15. Microphone
16. Video key "V"



17. Mini USB port
18. Micro SIM slot
19. Earphone jack / AV OUT port
20. Contact port
21. Menu/Play key "M"
22. Ok key "OK"
23. Battery compartment cover
24. Up/Left key "V"
25. Right/Down key "D"
26. LCD screen

1. Press the "P" key and "V" key simultaneously to force off the Recorder;
2. In power-on state, press and hold the "U" key for 3s to turn on/off the white LED;
3. In power-off state, press and hold the "U" key for 3s to turn on the Recorder and auto start recording the video;
4. In power-on state, press and hold the "P" key for 3s to turn on/off the laser LED;
5. In power-on state, press and hold the "V" key for 3s to turn on/off the UV LED;
6. In the video recording process, press the "M" key to mark the video; in manual IR mode, press and hold the "V" key for 3s to turn on/off the IR LED;
7. Press and hold the "OK" key for 3s to turn off the screen; press any key to wake up the screen.

> Display Information



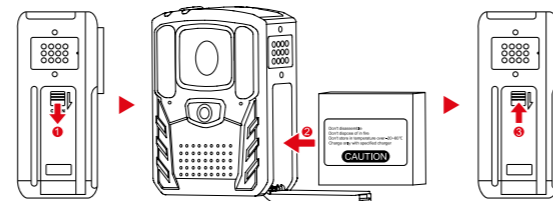
> Indicators

| | Red indicator | Yellow indicator | Blue indicator | Green indicator |
|-----------------|---------------|------------------|----------------|--|
| Power on | / | / | / | Remain on |
| Video recording | Flash slowly | / | / | Remain on |
| Photo shooting | Flash once | / | / | Remain on |
| Voice recording | / | Flash slowly | / | Remain on |
| Recharge | / | / | / | Flash slowly (in power-off state) Remain on (in power-on state) |
| Wi-Fi | / | / | Flash slowly | / |

★ Preparations Before Use

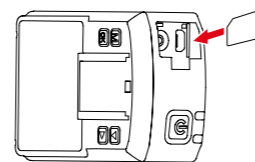
> Install the Battery

Open the battery compartment cover, install the battery straight and then close the battery compartment cover as shown in the figure below.



> Install the Micro SIM card

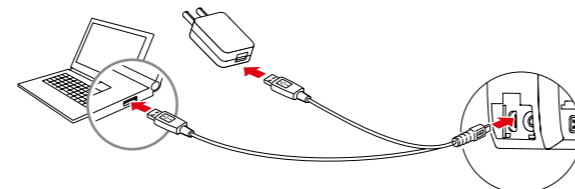
In power-off state, insert the Micro SIM card into the slot in the arrow direction.



> Recharging Mode

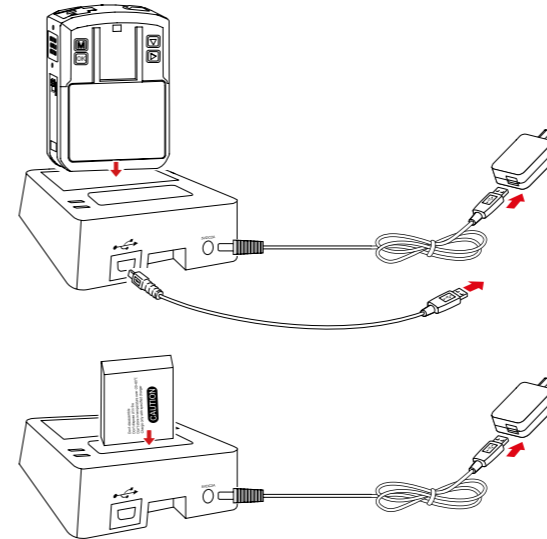
1. USB Recharging

Connect one end of the USB cable to the Mini USB port of the Recorder and the other end to the power adapter or PC.



1. Recharge with a 5V/2A power adapter or mobile power supply.
2. The green indicator will flash in the recharging process in power-off state and remain on once the battery is fully recharged; the green indicator will remain on in the recharging process in power-on state.
3. With a 5V/2A power adapter, the battery can be fully recharged in about 3.5h.
4. To keep the activity of the battery, please fully recharge it once a month if the Recorder is kept idle for a long time.
5. After connecting D24 to the Recorder, please press and hold D24 for 5s to turn it on and recharge the Recorder.

2. Recharge with the Recharging Base (The accessories not include in the P61 Standard)



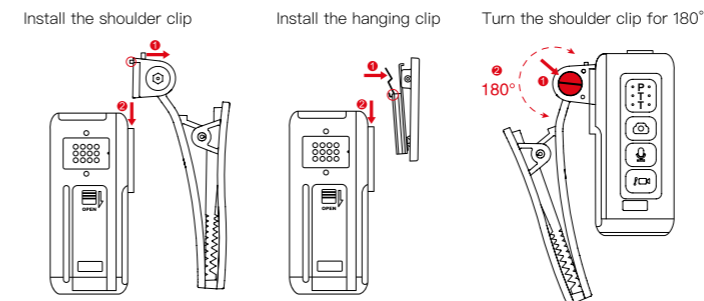
The USB port allows you to recharge the Recorder only, while the power plug port allows you to recharge both the Recorder and battery.

> Power On/Off

- Power on: press and hold the "U" key for 3s to power on the Recorder with a "Device On" sound.
- Power off: press and hold the "U" key for 3s to power off the Recorder with a "Device off" sound.

> Install/Remove the Shoulder Clip and Hanging Clip

1. Install: pull the snap to the right in the arrow direction and hold it, fix the clip downward in place and release the snap.
2. Remove: pull the snap to the right in the arrow direction and hold it, pull the clip up and release the snap.



Press the shoulder clip button in the arrow direction, and the shoulder clip can be turned freely for 180°.

★ Operation Instructions

> Video Recording

1. Start: press the "U" key to start recording the video with a "Start Video Recording" sound. The red indicator will flash slowly. The video duration "000:00:00" will be displayed on the upper right corner of the screen.
2. Stop: press the "U" key again to stop recording the video with a "Stop Video Recording" sound.
3. Play the video: press the "M" key to hear a "beep" sound, press the "V" / "D" key to select the "P" icon, press the "OK" key to enter the preview interface, press the "V" / "D" key to select the video to be played and press the "OK" key twice to play the selected video. Press the "M" key to return.

1. In the video recording process, press the Voice key to switch to the voice recording mode and auto save the current video.
2. In the video recording process, press the Photo key to take a snapshot.

> Photo Shooting

1. In photo shooting mode, press the "P" key to shoot a photo with a "click" sound.
2. Play the photo: press the "M" key to hear a "beep" sound, press the "V" / "D" key to select the "P" icon, press the "OK" key to enter the preview interface, press the "V" / "D" key to select the photo to be played and press the "OK" key to play the selected photo. Press the "OK" / "V" / "D" key to play other photos. Press the "M" key to return.

> Voice Recording

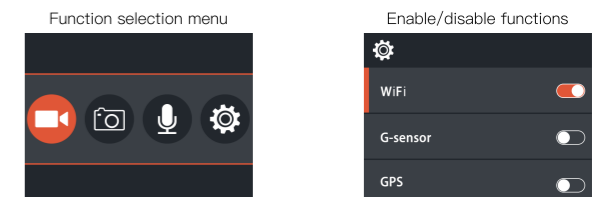
1. Press the "V" key to start recording the voice with a "Start Audio Recording" sound.
2. Press the "V" key again to stop recording the voice with two "Stop Audio Recording" sounds.
3. Play the voice file: press the "M" key to hear a "beep" sound, press the "V" / "D" key to select the "V" icon, press the "OK" key to enter the preview interface, press the "V" / "D" key to select the voice file to be played and press the "OK" key twice to play the selected voice file. Press the "M" key to return.

In the voice recording process, press the Video key to switch to the video recording mode and auto save the current voice file.

1. When playing a voice/video file, you can press the "V" ("V") key to reduce (increase) the volume.
2. When playing a video, you can press the "V" ("V") key to fast rewind (fast forward) the video.
3. When playing a photo, you can press the "V" ("V") key to zoom out (zoom in) the photo.
4. When a photo is zoomed in, you can press "V" to move it up/down or press "D" to move it left/right.

★ System Settings

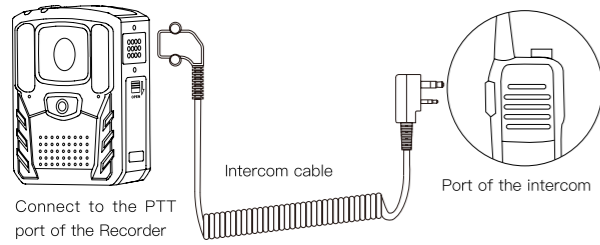
Press the "M" key to hear a "beep" sound, press the "V" / "D" key to select the "P" icon, press the "OK" key to enter the menu, press the "V" / "D" key to select the relevant function and press the "OK" key to enable/disable the selected function. Press the "M" key to return. See the figures below:



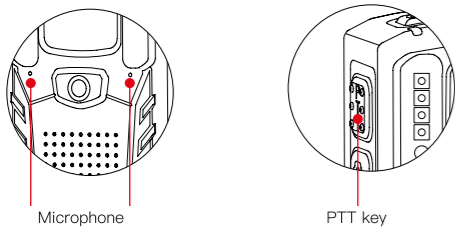
You can enable or disable the WiFi/G-Sensor/GPS/external camera function and view the software version.

> PTT Function

Connect the Recorder to the intercom via the intercom cable as shown in the figure below:



Now, the Recorder can act as a microphone:



- Press and hold the “PTT” key to start sending the speech.
- Release the “PTT” key to stop sending the speech.

1. The PTT function will continue to work even if the Recorder is powered off.
2. If the PTT function does not work when the Recorder is connected to the intercom for the first time, restart the intercom.

★ Connection to PC

Connect the Recorder to the PC via the Mini USB cable and turn on the power switch of the Recorder:



★ Management Software

> Install the Management Software

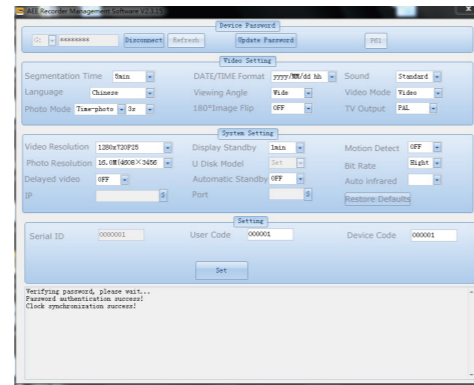
Click the “AEE” icon in the attached CD.



Click “Environment file” and follow the instructions to install Net Framework 3.5, and then click “Setup” and follow the instructions to install the management software of the Recorder.

> Use the Management Software

Click the “AEE” icon to enter the management software interface, select the current Recorder on the upper left corner, enter the default password “12345678” and click [Connect] to enter the management software interface of the Recorder.



You can change the password and general settings. Click “Set” to save such changes.

- ! The System Setting, User Code and Device Code can not be changed unless you enter the advanced password, which is held by the specified administrator only.

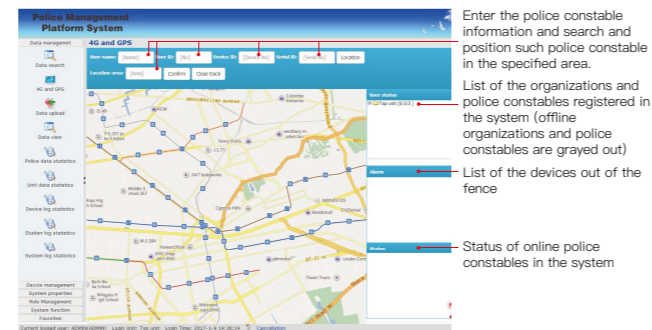
★ 4G Function

1. Enter the system: open the Internet Explorer and enter the IP address of the server to enter the police platform management system (default user name: ADMIN; default password: 111).



- ! Please use the Internet Explorer IE 11 or above.

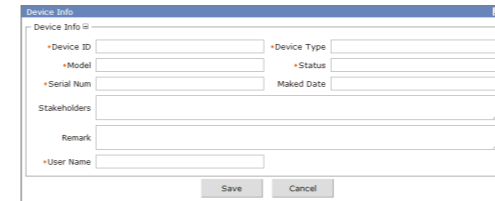
2. Enter the main interface of the police platform management system:



Function description:

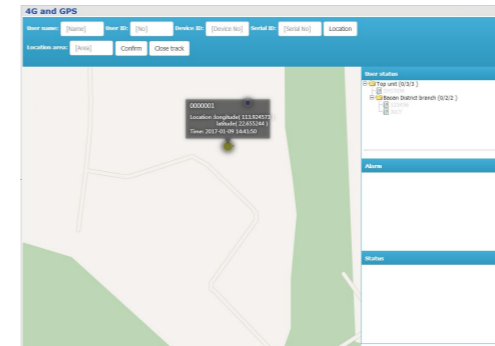
- A. Realtime Positioning Function
 - a. Realtime online function: display the online devices and refresh the preview of online devices and their tracks in real time.
 - b. Live broadcasting/monitoring function: click an online device to display its live shots and auto save its live video to the specified path.
 - c. Electronic fence function: set a fence (in the specified area) for the devices, and the out of fence alarm will be triggered if any device goes out of the fence.
 - d. Log function: keep the operation records in real time for future reference.
- B. Other Functions
 - a. History tracking: track the operation history of the police constables.

3. Enter the Recorder information:

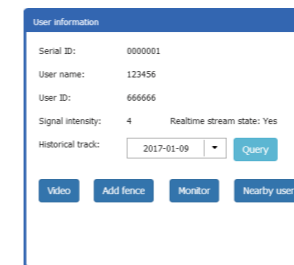


- ! To ensure successful connection in the background, please enter the accurate IP address, port No., device ID and S/N of the Recorder to be added in the background.

4. Function operation interface for the online Recorder:



Click the specified online device, and you can perform such function operations as Realtime Video, Add Fence, Background Monitor and Nearby Constables to the police constable. See the figure below:



★ GPS Function

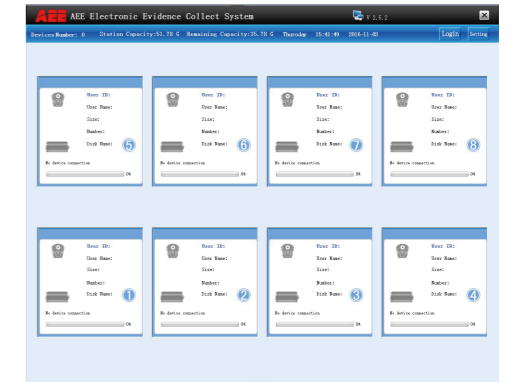
In power-on state, enter the menu to enable the GPS mode. The Recorder can receive the GPS signals when staying in an open area for about 1.5 minutes. The GPS icon will turn from white to green and the time of the Recorder will be synchronized. The longitude, latitude and number of positioning satellites will be displayed on the screen of the Recorder. You can connect the Recorder to a PC and open the Gpslogfile file (on the Recorder) to view the specific longitude, latitude and number of positioning satellites. See the figure below:

```
SystemTime: 2016-08-16 08:49:31; LatNum: 00° 00' 00.000"; Lat:0; LngNum: 000° 00' 00.000"; Lng:0;
SystemTime: 2016-08-16 08:49:32; LatNum: 00° 00' 00.000"; Lat:0; LngNum: 000° 00' 00.000"; Lng:0;
SystemTime: 2016-08-16 08:49:33; LatNum: 00° 00' 00.000"; Lat:0; LngNum: 000° 00' 00.000"; Lng:0;
SystemTime: 2016-08-16 08:49:34; LatNum: 00° 00' 00.000"; Lat:0; LngNum: 000° 00' 00.000"; Lng:0;
SystemTime: 2016-08-16 08:49:35; LatNum: 00° 00' 00.000"; Lat:0; LngNum: 000° 00' 00.000"; Lng:0;
SystemTime: 2016-08-16 08:49:36; LatNum: 00° 00' 00.000"; Lat:0; LngNum: 000° 00' 00.000"; Lng:0;
SystemTime: 2016-08-16 08:49:37; LatNum: 00 00 00.000; Lat:0; LngNum: 000 00 00.000; Lng:0;
SystemTime: 2016-08-16 08:49:38; LatNum: 00° 00' 00.000"; Lat:0; LngNum: 000° 00' 00.000"; Lng:0;
SystemTime: 2016-08-16 08:49:40; LatNum: 22° 39' 09.888"; Lat:N; LngNum: 113° 54' 48.948"; Lng:E;
SystemTime: 2016-08-16 08:49:41; LatNum: 22° 39' 09.888"; Lat:N; LngNum: 113° 54' 48.924"; Lng:E;
SystemTime: 2016-08-16 08:49:42; LatNum: 22° 39' 09.894"; Lat:N; LngNum: 113° 54' 48.928"; Lng:E;
SystemTime: 2016-08-16 08:49:43; LatNum: 22° 39' 09.888"; Lat:N; LngNum: 113° 54' 48.804"; Lng:E;
SystemTime: 2016-08-16 08:49:44; LatNum: 22° 39' 09.894"; Lat:N; LngNum: 113° 54' 48.804"; Lng:E;
SystemTime: 2016-08-16 08:49:45; LatNum: 22° 39' 09.894"; Lat:N; LngNum: 113° 54' 48.852"; Lng:E;
SystemTime: 2016-08-16 08:49:46; LatNum: 22° 39' 09.894"; Lat:N; LngNum: 113° 54' 48.788"; Lng:E;
SystemTime: 2016-08-16 08:49:47; LatNum: 22° 39' 09.900"; Lat:N; LngNum: 113° 54' 48.888"; Lng:E;
SystemTime: 2016-08-16 08:49:48; LatNum: 22° 39' 09.900"; Lat:N; LngNum: 113° 54' 48.900"; Lng:E;
```

As marked in the above figure, the date and time, latitude (N: north latitude; S: south latitude), longitude (E: east longitude; W: west longitude) and the number of positioning satellites are all displayed.

★ Data Acquisition Workstation

1. Data acquisition workstation: start the data acquisition workstation to auto upload data. When the green progress bar is completed by 100%, the data is uploaded successfully.



2. File management: view the video, voice and photo files.



★ Wi-Fi Function

With a built-in Wi-Fi module, the Recorder can be controlled remotely once connected to a mobile device via a remote control with Wi-Fi function.

> Install the APP

Please install the AEE APP “AEE Police” to your mobile device (you can search “AEE Police” in Google Play or Apple Store and download it).

> Enable and Connect Wi-Fi

1. Press the “M” key to hear a “beep” sound, press the “V / P” key to select the “Wi-Fi” icon, press the “OK” key to enter the menu, press the “V / P” key to select the WiFi function and press the “OK” key to enable the WiFi function.
2. On the mobile device, enable the Wi-Fi search function to search the Wi-Fi signal source named “AEE Police”, enter the password (default password: AEE12345) and click [Connect] to connect to the Recorder. The WiFi icon will turn from white to green if the connection is successful.
3. Click the relevant icon in the main interface to perform remote operations to the Recorder.

- ! 1. The maximum remote control distance between the Recorder and the mobile device in a barrier free environment is 40m;
- 2. Priority will be given to local operation commands (Recorder based) if remote operation commands (Wi-Fi based) and local operation commands occur simultaneously;
- 3. In case of any function or operation discrepancy between the current version and the updated version of the APP released on the network platform, the updated version shall prevail.